

RANGER & RZR LED HEADLIGHT KIT

P/N 2878275 & 2878542



POLARIS
The Way Out.®

Application

- MY11 and newer RZR, RZR-S and RZR-4 use Kit PN 2878275
- MY11 and newer full size Ranger models use Kit PN 2878542

Application that require additional harness kits

- MY10 and older RZR, RZR-S and RZR-4 use light Kit PN 2878275 with harness Kit PN 2878533
- MY09-MY10 Ranger-XP; Ranger HD and Ranger 500 models use light Kit PN 2878542 with harness Kit PN 2878533
- MY10 Ranger 800 Crew and Ranger 800 6x6 models use light Kit PN 2878542 with harness Kit PN 2878533
- MY10 and newer midsize Ranger 400, Ranger 500, Ranger 500 Crew and Ranger EV use light Kit PN 2878542 with harness Kit PN 2878623
- MY11 and newer Sportsman 400, 500 and 800 use light Kit PN 2878542 with harness Kit PN 2878624
- MY09 and newer Sportsman XP models use light Kit PN 2878542 with harness Kit PN 2878624

Before you begin, read these instructions twice and check to be sure all parts and tools are accounted for. Be sure to check the model year of your machine to ensure you have the correct light and harness kits for your given application. Utilizing the correct light and harness kit should result in high and low beam operation on all units. Sportsman 400, 500, and 800 models will benefit by having both the pod light and bumper lights during high beam operation.

Please retain these installation instructions for future reference and parts ordering information.

This Kit Includes:

Qty	Part Description	PN 2878275	PN 2878542
1	Asm-Headlight, Bumper, LED, LH	2411593	2411653
1	Asm-Headlight, Bumper, LED, RH	2411594	2411654
1	Harness-LED Headlights, LH	2411711	2411711
1	Harness-LED Headlights, RH	2411712	2411712
6	Spring-Headlight	7043172	7043172
6	Screw-10x1.12 TX PN PLS-Y	7512078	7512078
1	Instructions-Kit, LED Headlights	9923302	9923302

Tools Required:

Torx Wrench Set

Screw Driver Set

Side Cutter

IMPORTANT: For your safety, and to ensure a satisfactory installation, perform all installation steps correctly in the sequence as shown on the attached instructions.

INSTALLATION INSTRUCTIONS

1. Disconnect the headlight leads at the bulb.
2. Remove the front plastic bumper/fascia and carefully lay it on a clean, padded surface face down. The headlight packing material can be utilized to protect the bumper and lights during installation.
3. Remove the retaining bands and screws from the stock lights and carefully remove them from the bumper/fascia.
4. Install the six headlight springs (PN 7043172) onto the headlight mounting bosses on the back side of the bumper making sure they are fully seated. On some models the springs may fit tight and require a clockwise twisting motion in order to fully seat the spring.

5. Plug the headlight jumper harnesses (PN 2411711 and PN 2411712) into the LED headlights. The harnesses are LH/RH dependent so take special care to plug the correct harness into the correct light. The harnesses have tags that specify LH/RH and the lights should have an L or R designation molded in to the black plug on the back side of the light. The lights will not function if the harnesses are used on the wrong side. Figure 1. Please note that jumper harnesses (PN 2411711 and PN 2411712) may not be required if your application requires an additional harness kit.
6. Use the six screws (PN 7512078) to secure the lights to the bumper/fascia. Tighten screws evenly leaving approximately .200" of thread exposed between the light and the top of the mounting boss for final adjustment. Figure 2.
7. Reinstall bumper/fascia on machine, connect the headlight jumper wires to the headlight leads on the vehicle and check for proper operation on both high and low beam.
 - a. Low beam should illuminate the three outside LED bulbs and one of the three center bulbs.
 - b. High beam should illuminate the three outside LED bulbs and all three center LED bulbs as well as the high beam indicator light on the switch.
8. Check wire routings to ensure all wires are clear of moving components and sharp edges.
9. Refer to the steps below for the final headlight adjustment instructions.



Figure 1

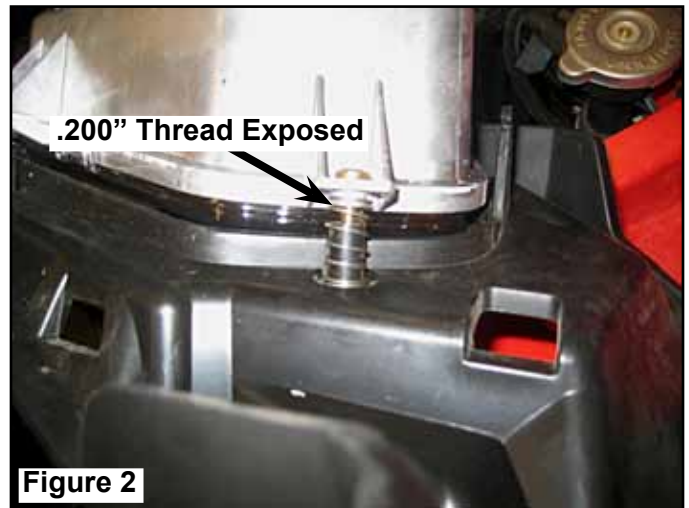


Figure 2

Headlight High Beam Adjustment

The headlight beam can be adjusted slightly upward or downward and to the left or right.

1. Position the vehicle on a level surface. The headlight should be approximately 25 ft. (7.6 m) from a wall. Figure 3.
2. Place the transmission in **PARK**.
3. Measure the distance from the floor to the center of the headlight and make a mark on the wall at the same height.
4. Apply the brakes. Start the engine. Turn the headlights to high beam.
5. Include the weight of a rider on the seat while performing this step. Observe the headlight aim. As a starting point, the most intense part of the head-light beam should be 2 inches (5 cm) below the mark on the wall. Adjust to operator preference.
6. Tighten or loosen the three headlight screws to adjust the beam upward or downward or to the left or right. Figure 4.

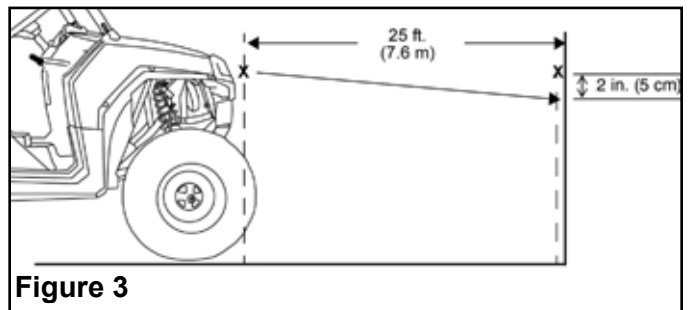


Figure 3

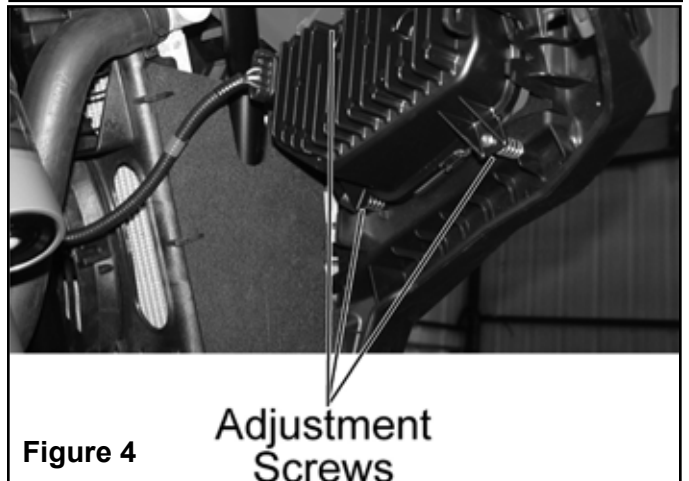


Figure 4