

# RANGER SEAT PEG REPAIR KIT

## P/N 2204383



**POLARIS**  
The Way Out.®

### Application

Polaris Ranger's except SERIES 99

**Before you begin, read these instructions twice and check to be sure all parts and tools are accounted for. Please retain these installation instructions for future reference and parts ordering information.**

### This Kit Includes:

Qty	Part Description	Part Number
1	Plate-Seatbase Mount	5254689
1	Aluminum Seat Peg	5910096
1	Washer	7555734
1	Nut	7542324
4	Rivet	7621479
1	Instructions	9923162

### Tools Required:

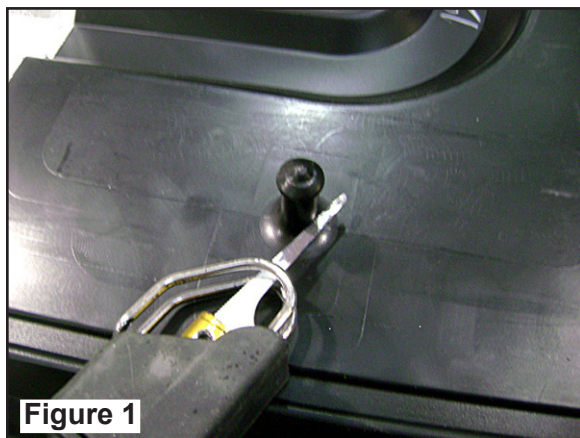
Safety glasses	¾" Open End Wrench
Electric Drill	Suitable Saw for Cutting Plastic
13/64" Drill Bit	Torque Wrench
1 1/8" Hole Saw	½" Socket
Rivet Gun	Scratch Awl or Center Punch

**IMPORTANT:** Please follow instructions precisely for proper seat peg alignment and installation.

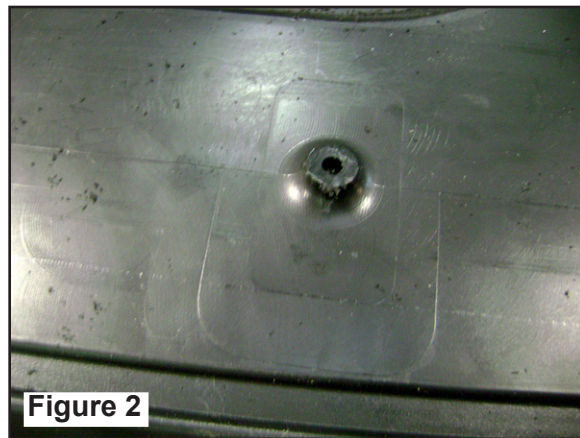
**IMPORTANT: WEAR YOUR SAFETY GLASSES!**

### INSTALLATION INSTRUCTIONS

1. Remove seat from the RANGER and place it upside-down on a clean work bench so the seat will not be damaged in the process of installing the kit.
2. If seat peg is bent or broken, cut it off using suitable saw. Cut the peg off as flush as possible to the seat base. If the seat peg has broken off, leaving its own hole, you can use the seatbase mount plate (PN 5254689) as a template, aligning the marks to ensure the 1 1/8" hole is properly centered. (Figures 1 and 2)



**Figure 1**



**Figure 2**

3. Using an electric drill and 1 1/8th hole saw, drill a 1 1/8th hole using the seat peg hole or mount plate to center the hole saw. **DO NOT drill too deep**; drill just far enough to get through to the plastic, revealing the seat foam. Figures 3 and 4.

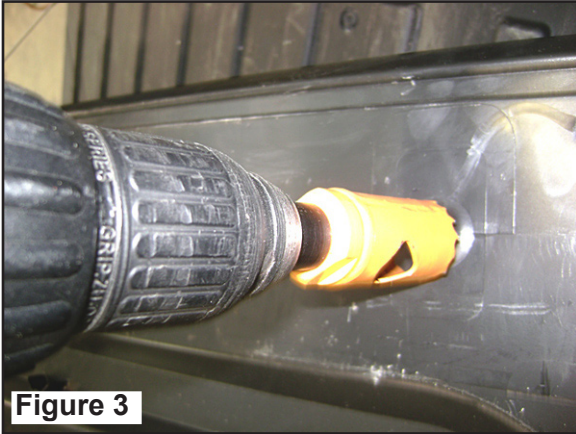


Figure 3

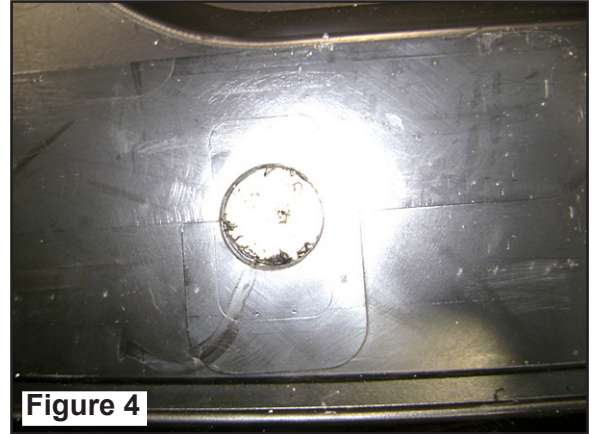


Figure 4

4. Install aluminum seat peg (PN 5910096) through seatbase mount plate (PN 5254689) using nut (PN 7542324) and washer (PN 7555734). Be sure the washer (PN 7555734) is installed between the mount plate and the nut. Torque nut to 15 ft. lbs. (20.3 Nm) using 3/4" open end wrench, 1/2" socket and torque wrench. Figure 5.

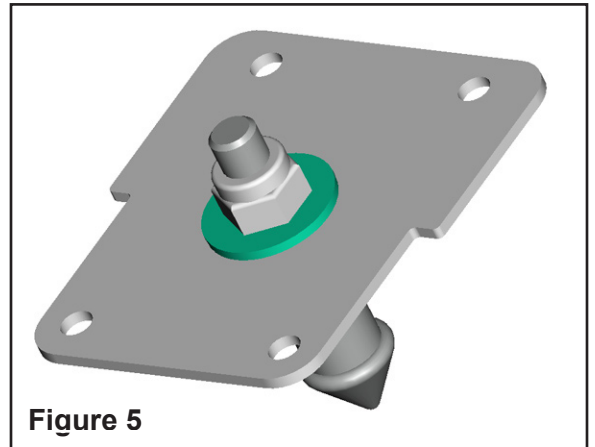


Figure 5

5. Position mount plate onto seat base where the 1 1/8" hole is now drilled. Match the alignment marks on mount plate to the factory alignment marks on the seat base. Aligning these marks will ensure that the new seat peg is centered properly in the hole. Use scratch awl or center punch to transfer the mount plate mounting hole locations onto the plastic seat base. Figure 6.

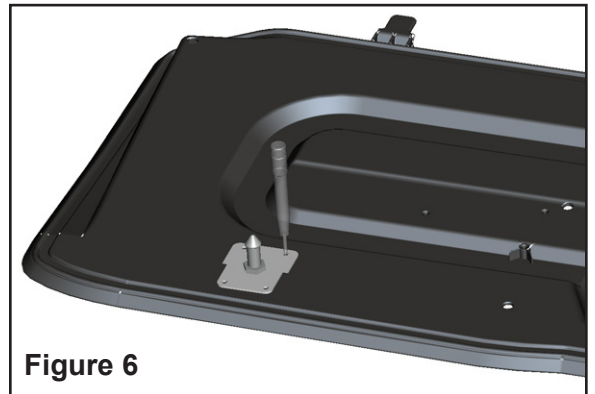
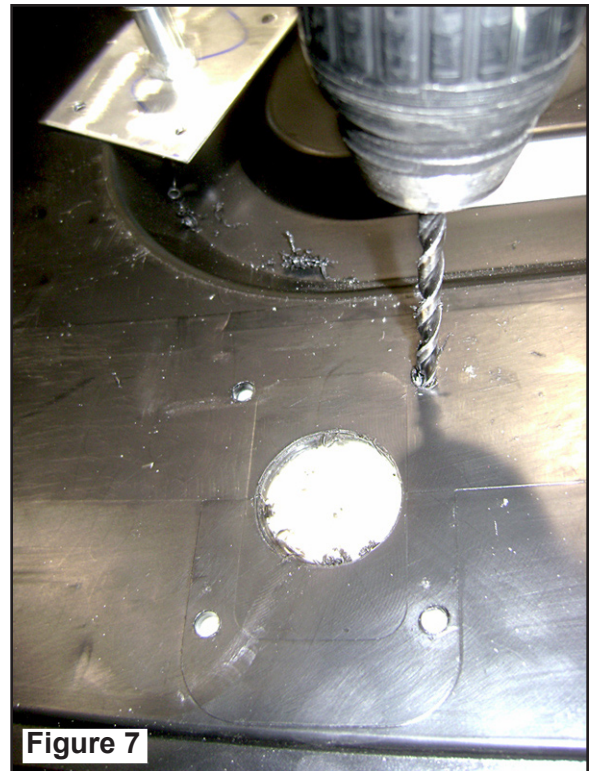


Figure 6

6. Drill holes located in Step 5 using an electric drill and 11/64th drill bit.

**IMPORTANT:** DO NOT drill too deep. The hole just needs to penetrate the plastic, not the foam seat pad. Figure 7.



7. Position mount plate onto seat base and align marks and holes from Steps 5 and 6. Place rivets (PN 7621479) into holes and install with rivet gun. Figure 8.
8. Re-install seat on the RANGER and check fitment.

